

FIRE SAFETY



SQUAD

Coloring Book



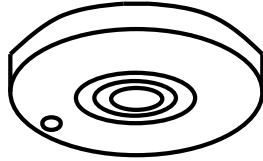
TRAVIS COUNTY ESD #6
LAKE TRAVIS FIRE RESCUE



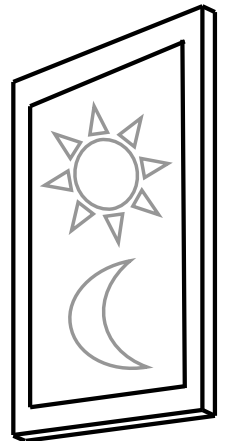


COMMANDER CARL

COMMANDER CARL SAYS:



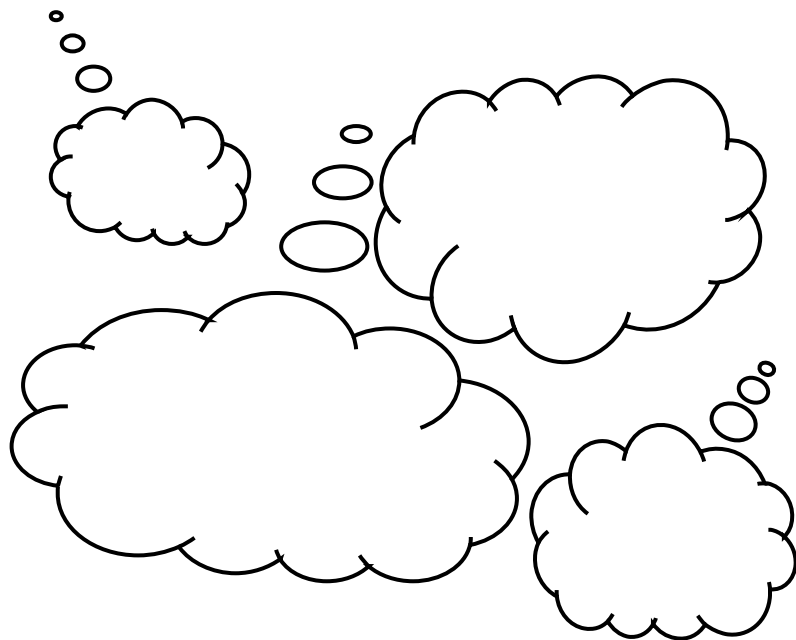
*Check your smoke alarms
monthly; pick a date and
mark it on your calendar!*





ENGINEER ERIK

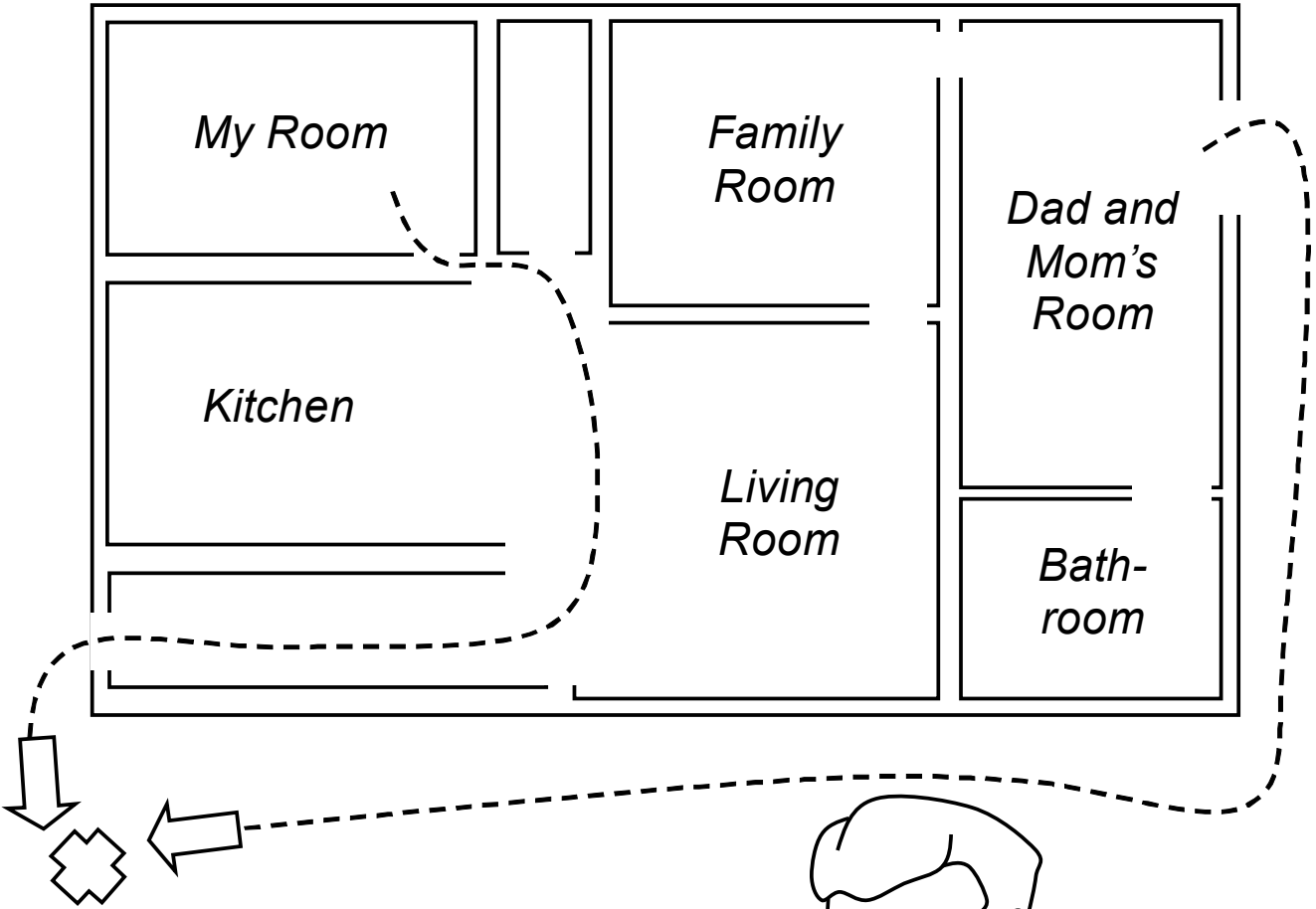
ENGINEER ERIK SAYS:



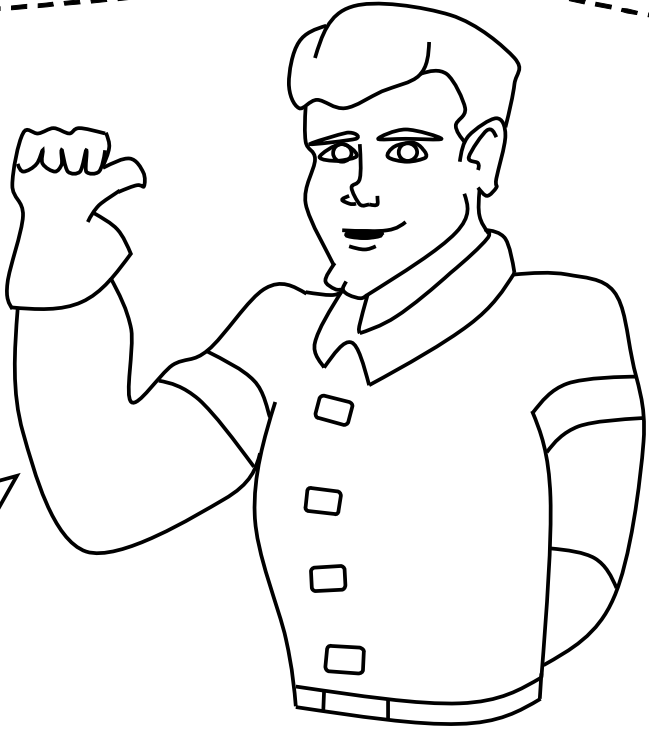


FIREFIGHTER FOX

FIREFIGHTER FOX SAYS:



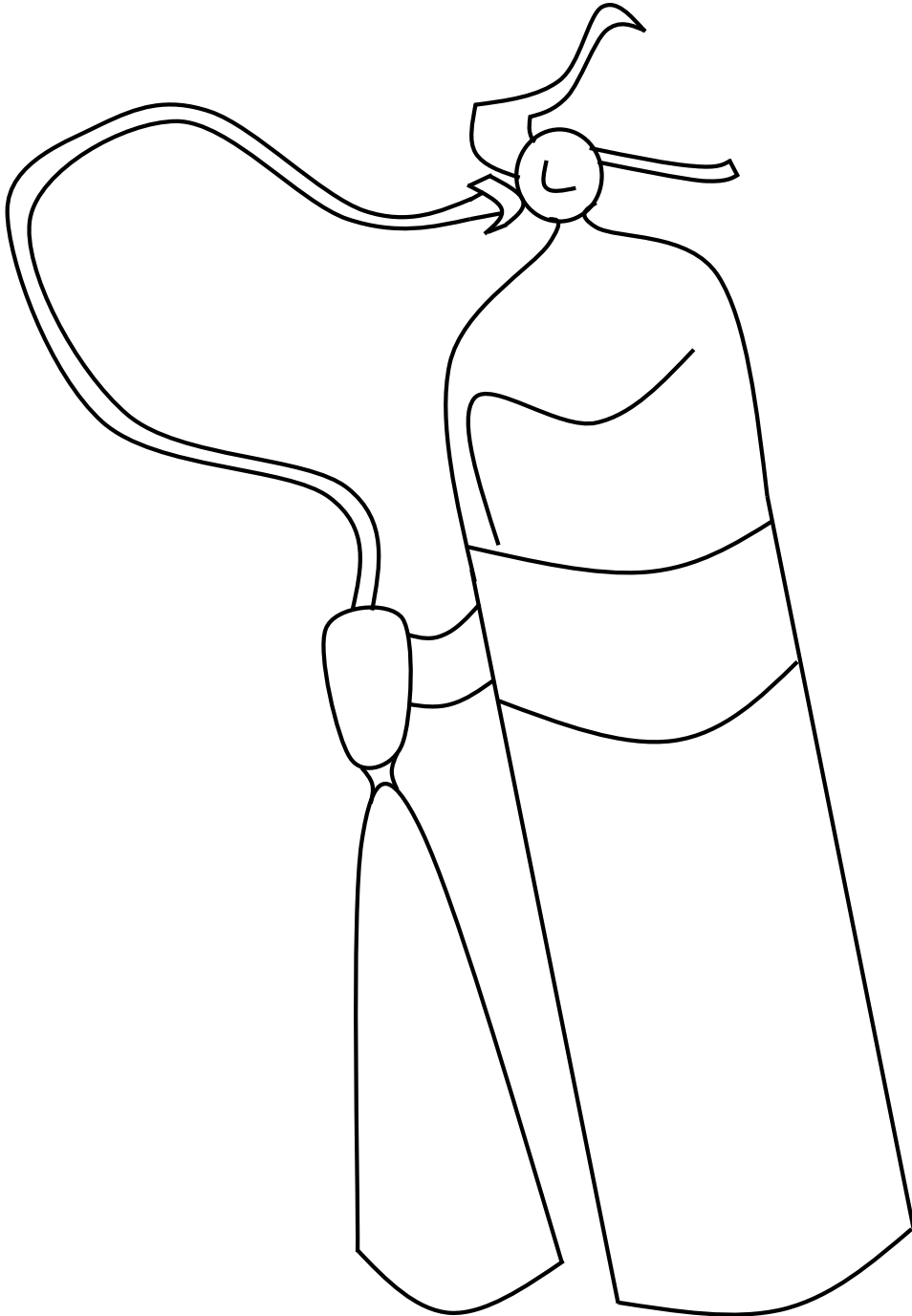
Have a family fire escape plan and a meeting spot outside the



MY FAMILY FIRE ESCAPE PLAN:

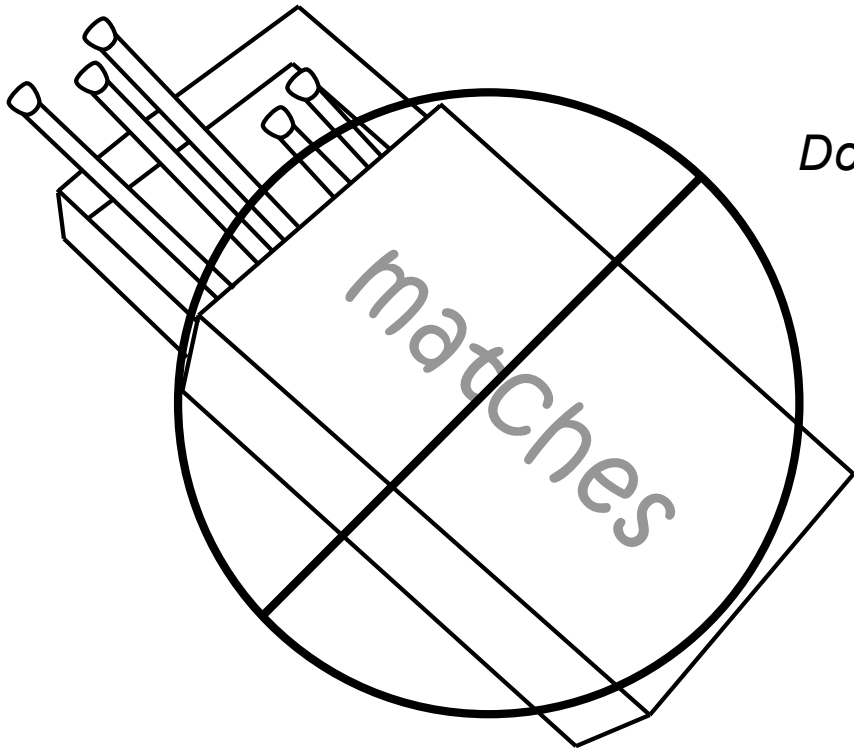
A large rectangular area defined by a dotted line, intended for drawing a family fire escape plan. The area is empty and occupies most of the page below the title.

BE SMART. BE SAFE.



Make sure you have a current fire extinguisher in the house. Everyone should know how to use it.

BE SMART. BE SAFE.



Don't play with matches.

Don't play with fire or stand too close to the fireplace.





*This is what a firefighter wears when he goes into a fire.
Don't be afraid — he's there to help!*

**BE A PART OF OUR
FIRE SAFETY SQUAD!**



*For more information on fire safety, contact:
Lake Travis Fire Rescue
Travis County ESD #6
15516 General Williamson Drive
Austin, TX 78734
(512) 266-2533 phone
www.ltfr.org*